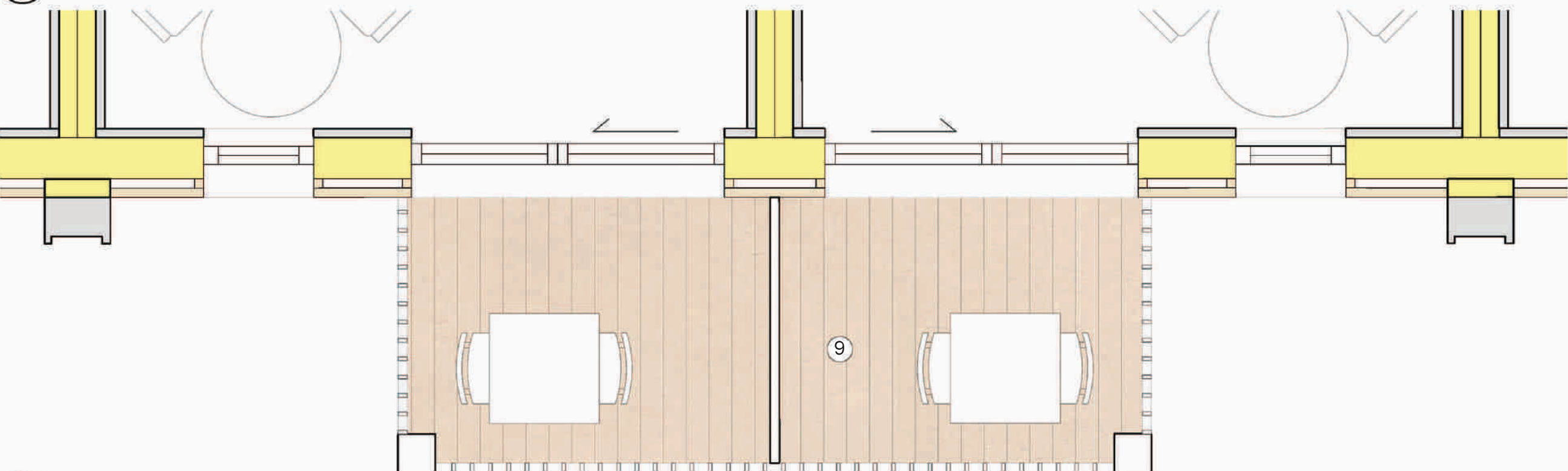




01  
0202  
Proposed  
Detail Bay Elevation  
1:25@A1



02  
0202  
Proposed  
Detail Bay Plan  
1:25@A1



03  
0202  
Proposed  
Detail Bay Section  
1:25@A1

0 50cm 1m 1.5m

Materials key:

1. Terracotta Roof Tile
2. White Painted Metal / Timber Frame White
3. Painted Metal / Timber Balustrade
4. White painted Aluminum / Timber window frames with clear double glazing
5. Horizontal rain-screen Timber / Composite cladding
6. Clear glazed wind screens
7. Rendered masonry retaining wall
8. White painted metal / timber fascia
9. Timber decking
10. Stone
11. Timber
12. Green roof
13. Timber privacy screen

Revision	Date	Description
A	10/09/2021	Planning

© copyright: Wimshurst Pelleriti, all rights reserved 2021

Do not scale-off this drawing. Wimshurst Pelleriti take no responsibility for any dimensions obtained by measuring or scaling from this drawing and no reliance may be placed on such dimensions. If no dimension is given, it is the responsibility of the recipient to ascertain the dimension specifically from the Architect or by site measurement.

The sizing of all structural and service elements must always be checked against the relevant engineers drawings. No reliance should be placed upon sizing information shown on this drawing.

**Project**  
**Roslin Beach Hotel**  
Thorpe Esplanade, Thorpe Bay, Southend-on-Sea SS1 3BG

**Drawing Title**  
Typical Hotel Room Bay Details  
Proposed

Drawing Number	Revision
WP-0753-A-0202-E-XX	A

Scale @ A1 / A3	Revision Date
1:25 / 50	10/09/2021

**Drawing Purpose**  
PLANNING

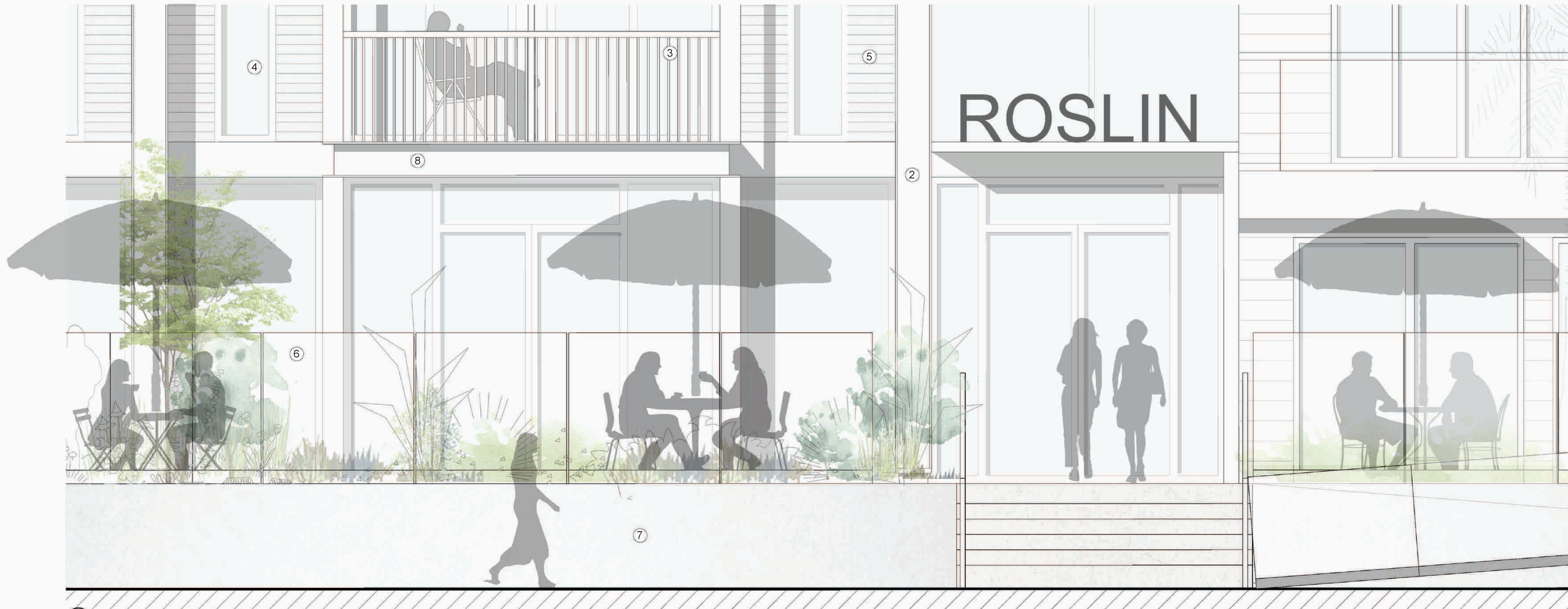
**WIMSHURST PELLERITI**

The Mews,  
6 Putney Common, SW15 1HL

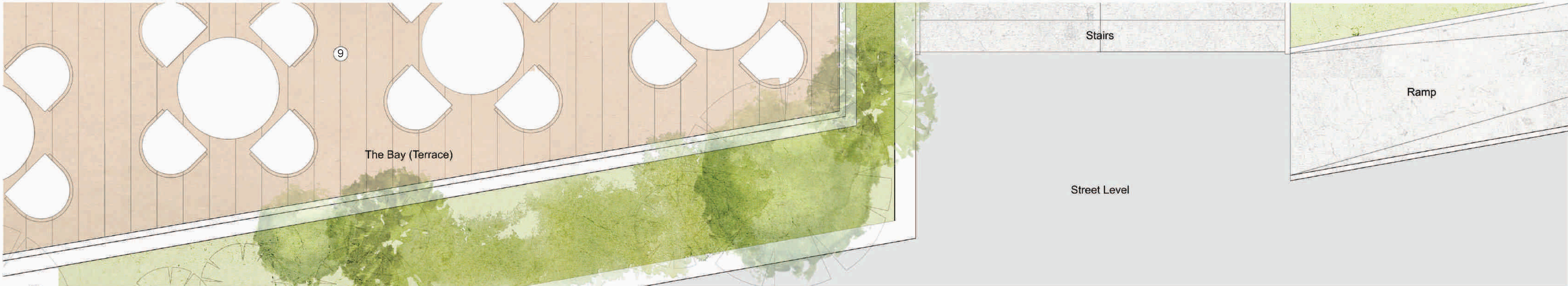
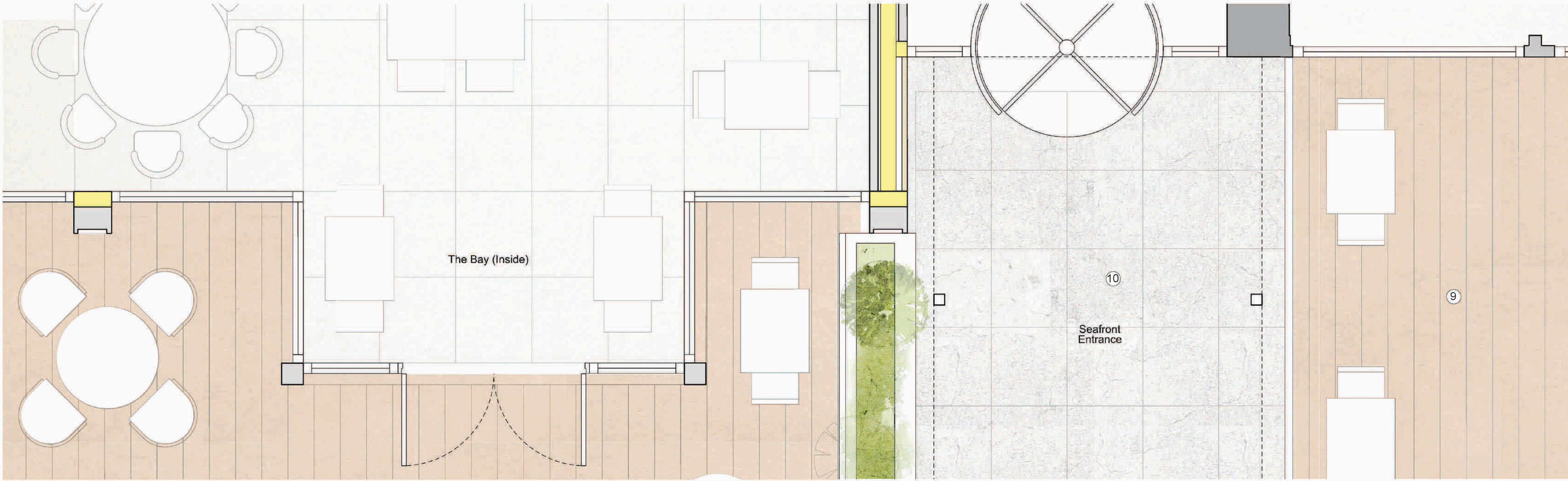
0208 780 2206  
info@wp.uk.com  
wimshurst-pelleriti.com







01  
0203  
Proposed  
Detail Bay Elevation  
1:25@A1



02  
0203  
Proposed  
Detail Bay Plan  
1:25@A1

0 50cm 1m 1.5m

Materials key:

1. Terracotta Roof Tile
2. White Painted Metal / Timber Frame White
3. Painted Metal / Timber Balustrade
4. White painted Aluminum / Timber window frames with clear double glazing
5. Horizontal rain-screen Timber / Composite cladding
6. Clear glazed wind screens
7. Rendered masonry retaining wall
8. White painted metal / timber fascia
9. Timber decking
10. Stone
11. Timber
12. Green roof
13. Timber privacy screen

Revision	Date	Description
A	10/09/2021	Planning

© copyright: Wimshurst Pelleriti, all rights reserved 2021

Do not scale-off this drawing. Wimshurst Pelleriti take no responsibility for any dimensions obtained by measuring or scaling from this drawing and no reliance may be placed on such dimensions. If no dimension is given, it is the responsibility of the recipient to ascertain the dimension specifically from the Architect or by site measurement.

The sizing of all structural and service elements must always be checked against the relevant engineers drawings. No reliance should be placed upon sizing information shown on this drawing.

Project  
**Roslin Beach Hotel**  
Thorpe Esplanade, Thorpe Bay, Southend-on-Sea SS1 3BG

Drawing Title  
**Front Entrance & Function Space Bay Details**  
Proposed

Drawing Number	Revision
WP-0753-A-0203-E-XX	A
Scale @ A1 / A3	Revision Date
1:25 / 50	10/09/2021

Drawing Purpose  
**PLANNING**

**WIMSHURST PELLERITI**

The Mews,  
6 Putney Common, SW15 1HL

0208 780 2206  
info@wp.uk.com  
wimshurst-pelleriti.com







01  
0204  
Proposed  
Detail Bay Section  
1:25@A1

0 50cm 1m 1.5m

Materials key:

1. Terracotta Roof Tile
2. White Painted Metal / Timber Frame White
3. Painted Metal / Timber Balustrade
4. White painted Aluminum / Timber window frames with clear double glazing
5. Horizontal rain-screen Timber / Composite cladding
6. Clear glazed wind screens
7. Rendered masonry retaining wall
8. White painted metal / timber fascia
9. Timber decking
10. Stone
11. Timber
12. Green roof
13. Timber privacy screen

A	10/09/2021	Planning
Revision	Date	Description

© copyright: Wimshurst Pelleriti, all rights reserved 2021

Do not scale-off this drawing. Wimshurst Pelleriti take no responsibility for any dimensions obtained by measuring or scaling from this drawing and no reliance may be placed on such dimensions. If no dimension is given, it is the responsibility of the recipient to ascertain the dimension specifically from the Architect or by site measurement.

The sizing of all structural and service elements must always be checked against the relevant engineers drawings. No reliance should be placed upon sizing information shown on this drawing.

**Project**  
**Roslin Beach Hotel**  
Thorpe Esplanade, Thorpe Bay, Southend-on-Sea SS1 3BG

**Drawing Title**  
Typical Function Space & Terrace Detail Section  
Proposed

Drawing Number	Revision
WP-0753-A-0204-E-XX	A
Scale @ A1 / A3	Revision Date
1:25 / 50	10/09/2021

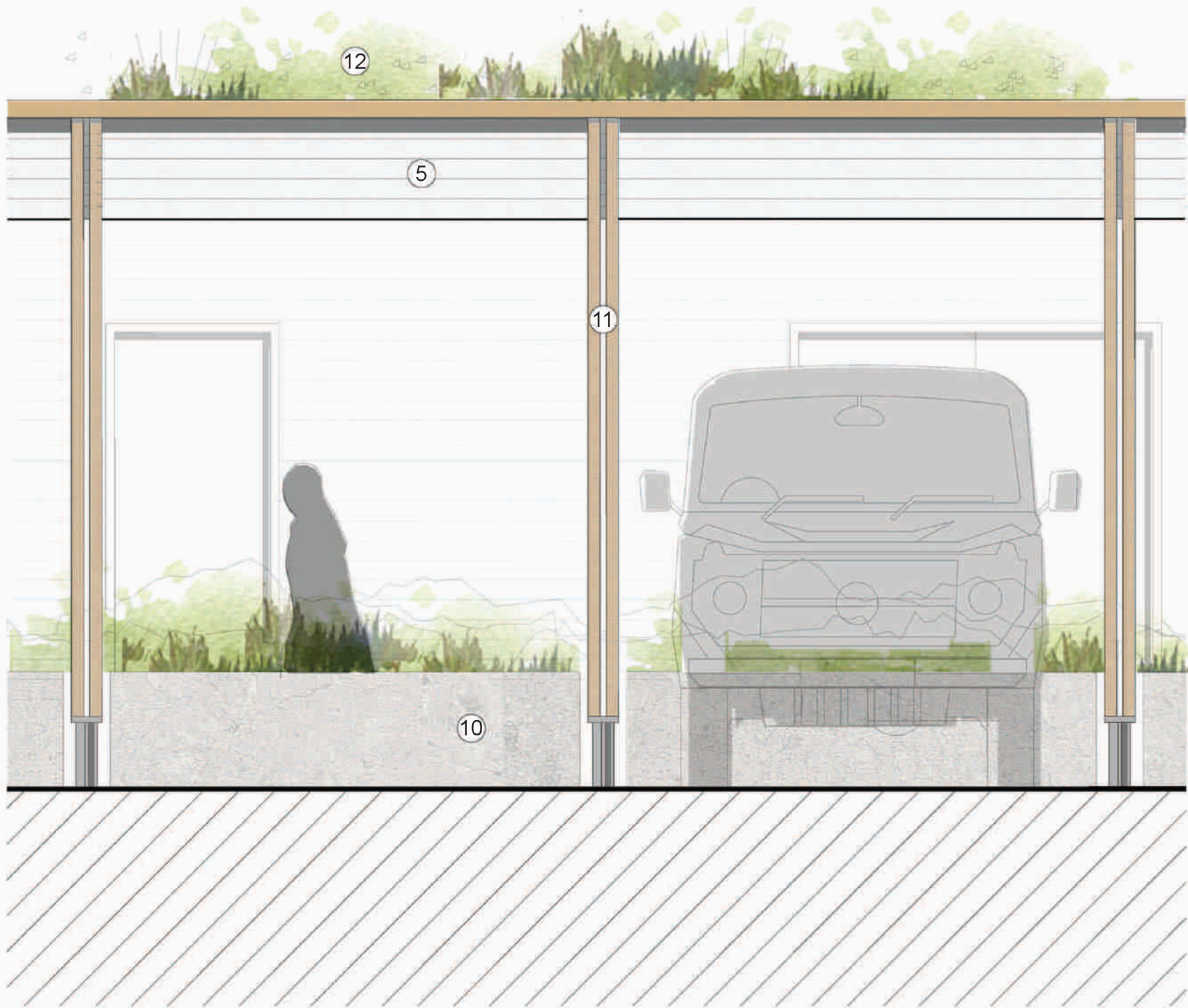
**Drawing Purpose**  
PLANNING

**WIMSHURST PELLERITI**

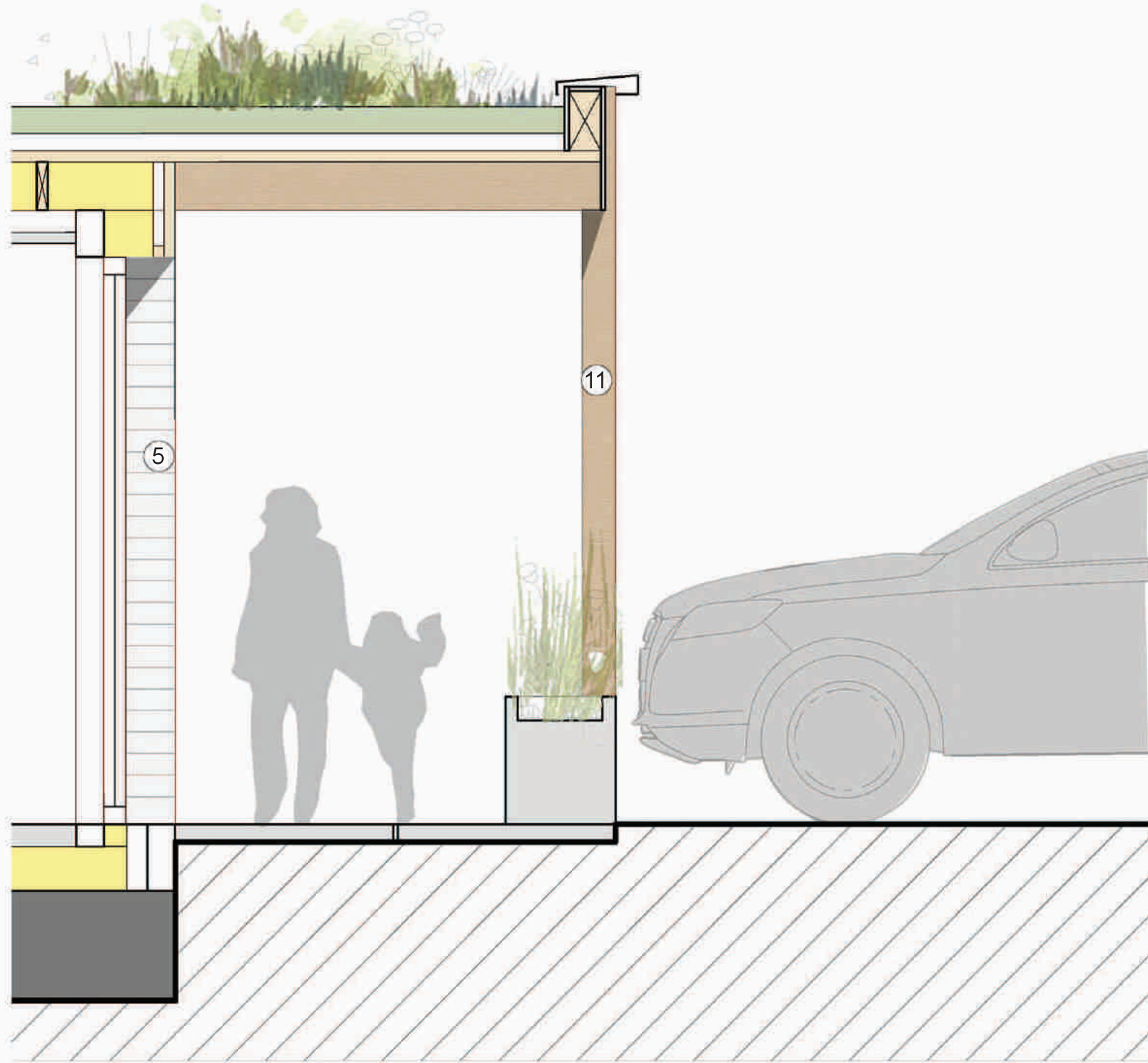
The Mews,  
6 Putney Common, SW15 1HL  
0208 780 2206  
info@wp.uk.com  
wimshurst-pelleriti.com



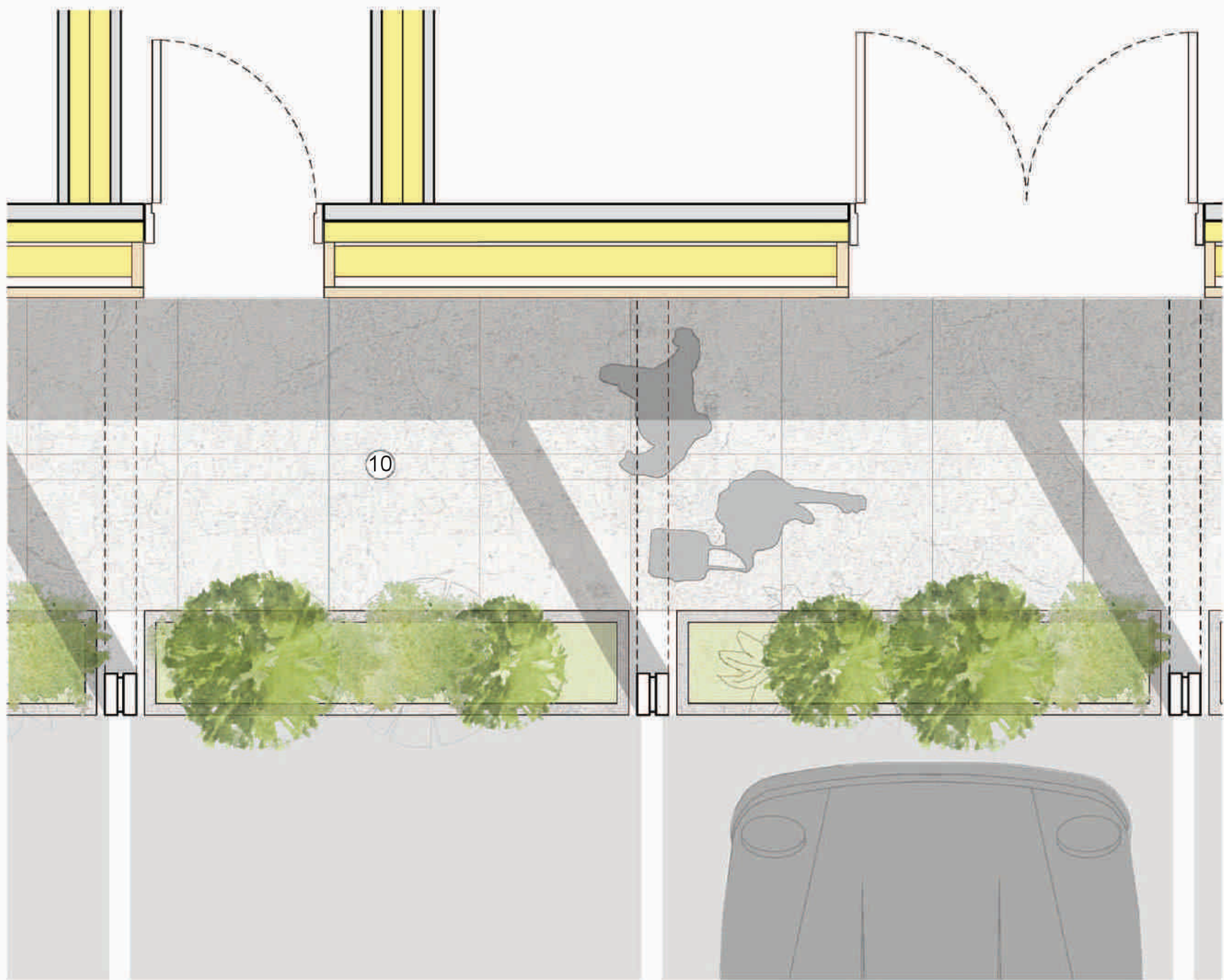




01  
0205  
Proposed  
Detail Bay Elevation  
1:25@A1



03  
0205  
Proposed  
Detail Bay Section  
1:25@A1



02  
0205  
Proposed  
Detail Bay Plan  
1:25@A1

0 50cm 1m 1.5m

Materials key:

1. Terracotta Roof Tile
2. White Painted Metal / Timber Frame White
3. Painted Metal / Timber Balustrade
4. White painted Aluminum / Timber window frames with clear double glazing
5. Horizontal rain-screen Timber / Composite cladding
6. Clear glazed wind screens
7. Rendered masonry retaining wall
8. White painted metal / timber fascia
9. Timber decking
10. Stone
11. Timber
12. Green roof
13. Timber privacy screen

Revision	Date	Description
A	10/09/2021	Planning

© copyright: Wimshurst Pelleriti, all rights reserved 2021

Do not scale-off this drawing. Wimshurst Pelleriti take no responsibility for any dimensions obtained by measuring or scaling from this drawing and no reliance may be placed on such dimensions. If no dimension is given, it is the responsibility of the recipient to ascertain the dimension specifically from the Architect or by site measurement.

The sizing of all structural and service elements must always be checked against the relevant engineers drawings. No reliance should be placed upon sizing information shown on this drawing.

**Project**  
**Roslin Beach Hotel**  
Thorpe Esplanade, Thorpe Bay, Southend-on-Sea SS1 3BG

**Drawing Title**  
**North Colonnade Bay Details**  
Proposed

Drawing Number	Revision
WP-0753-A-0205-E-XX	A
Scale @ A1 / A3	Revision Date
1:25 / 50	10/09/2021

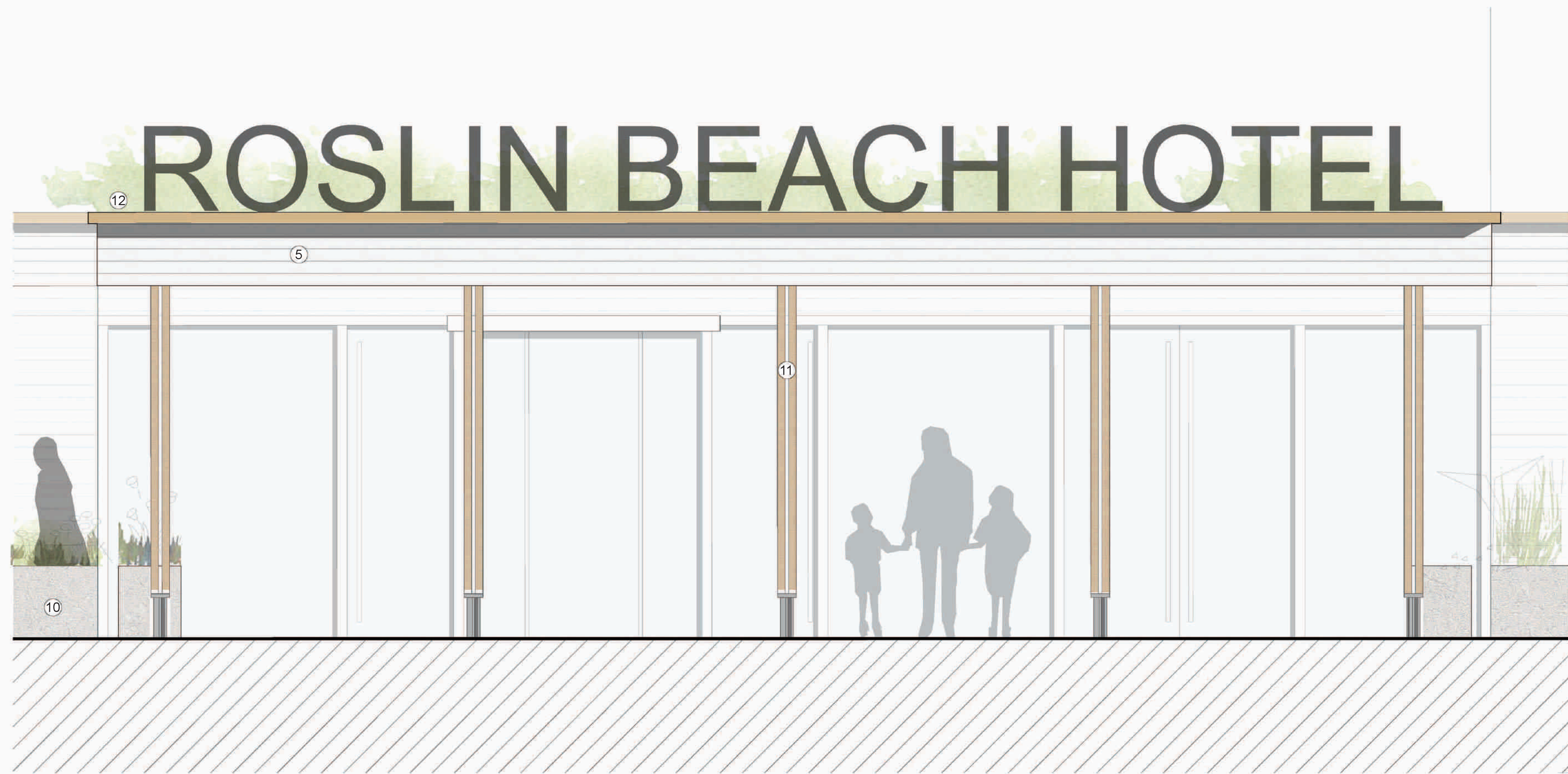
**Drawing Purpose**  
**PLANNING**

**WIMSHURST PELLERITI**

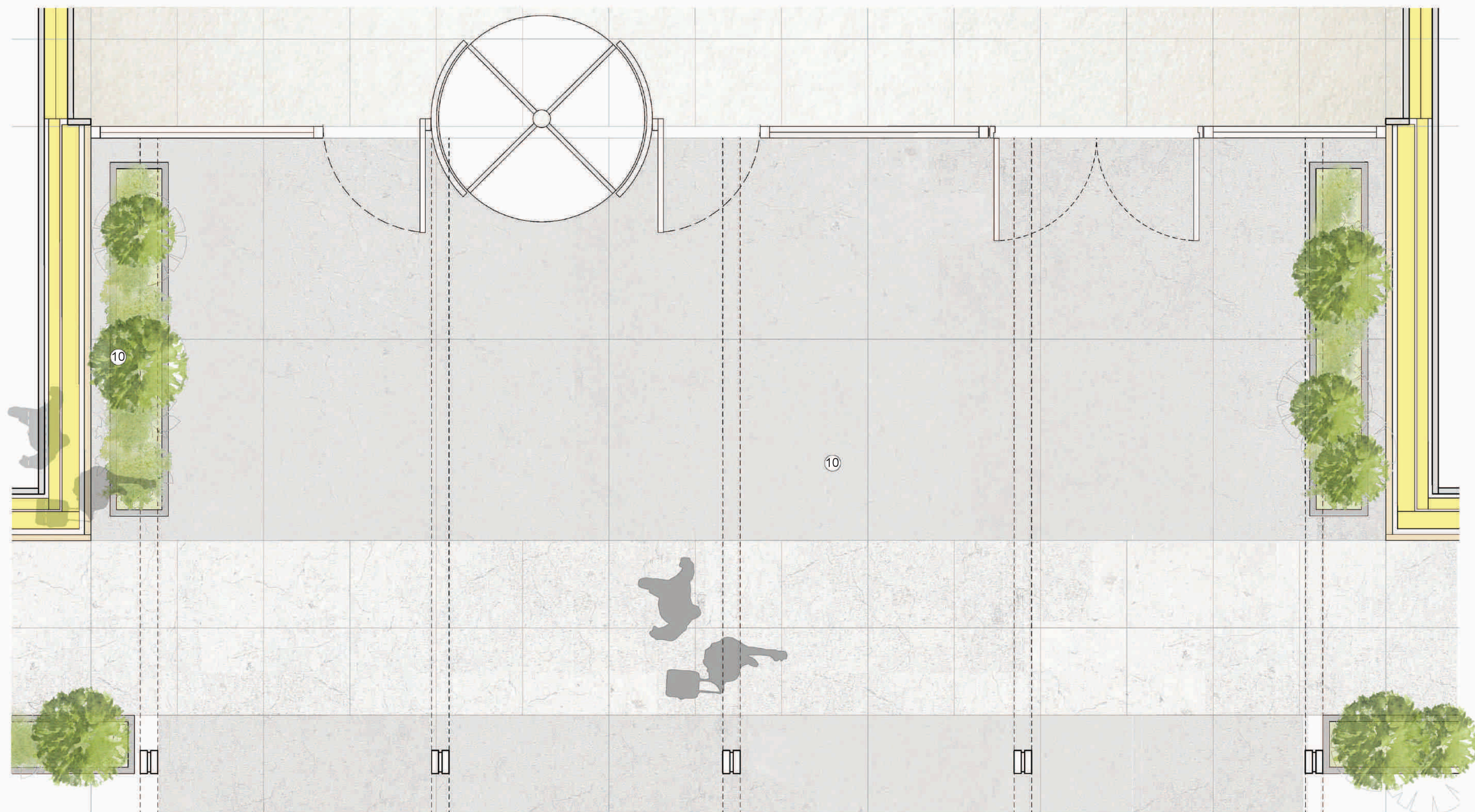
The Mews,  
6 Putney Common, SW15 1HL  
0208 780 2206  
info@wp.uk.com  
wimshurst-pelleriti.com







01  
0206  
Proposed  
Detail Bay Elevation  
1:25@A1



02  
0206  
Proposed  
Detail Bay Plan  
1:25@A1

0 50cm 1m 1.5m

Materials key:

1. Terracotta Roof Tile
2. White Painted Metal / Timber Frame White
3. Painted Metal / Timber Balustrade
4. White painted Aluminum / Timber window frames with clear double glazing
5. Horizontal rain-screen Timber / Composite cladding
6. Clear glazed wind screens
7. Rendered masonry retaining wall
8. White painted metal / timber fascia
9. Timber decking
10. Stone
11. Timber
12. Green roof
13. Timber privacy screen

Revision	Date	Description
A	10/09/2021	Planning

© copyright: Wimshurst Pelleriti, all rights reserved 2021

Do not scale-off this drawing. Wimshurst Pelleriti take no responsibility for any dimensions obtained by measuring or scaling from this drawing and no reliance may be placed on such dimensions. If no dimension is given, it is the responsibility of the recipient to ascertain the dimension specifically from the Architect or by site measurement.

The sizing of all structural and service elements must always be checked against the relevant engineers drawings. No reliance should be placed upon sizing information shown on this drawing.

**Project**  
**Roslin Beach Hotel**  
Thorpe Esplanade, Thorpe Bay, Southend-on-Sea SS1 3BG

**Drawing Title**  
**Main Entrance Bay Details**  
Proposed

Drawing Number	Revision
WP-0753-A-0206-E-XX	A
Scale @ A1 / A3	Revision Date
1:25 / 50	10/09/2021

**Drawing Purpose**  
**PLANNING**

**WIMSHURST PELLERITI**

The Mews,  
6 Putney Common, SW15 1HL  
0208 780 2206  
info@wp.uk.com  
wimshurst-pelleriti.com

